

EFORM PLASTIC LPBF SYSTEM

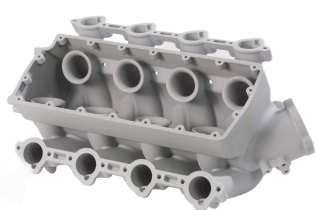


Robust small-batch manufacturing capabilities

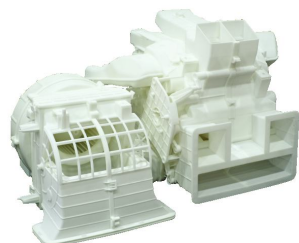
Truly open industrial grade SLS platform

Industrial-level functionality at an entry-level price point

REPEATABLE, HIGH-QUALITY PARTS



Automotive



Aerospace



Consumer Products



Mold



Medical & Dental

YOUR PRODUCTION TOOLS FOR INDUSTRIAL PLASTIC AM

We provide top-tier industrial-grade plastic LPBF systems, materials, and software. Our solutions offer unmatched flexibility in machine operation and material selection, with open parameter sets and processing chamber temperatures ranging from 190°C to 280°C.

MATERIALS

Farsoon excels in high-performance PA12 and PA6 materials, developed by our strong R&D team. We also collaborate with leading suppliers to offer new, advanced materials through our open material policy.

FS3300PA, FS3300PA-F, FS3201PA-F, FS3401GB, FS3401GB-F, FS4100PA, FS3150CF, FS3250MF, FS6140GF, FS1092A-TPU*, FS8100PPS, FS4100PA, FS 1092A-TPU, FS1088A-TPU*, Ultrasint®, PA6*, Ultrasint® PP nat 01*, LUVOSINT TPU X92A-1064 WT.

EFORM PLASTIC LPBF SYSTEM

VERSATILE BUILD ENVELOPE
9.8×9.8×12.6 IN

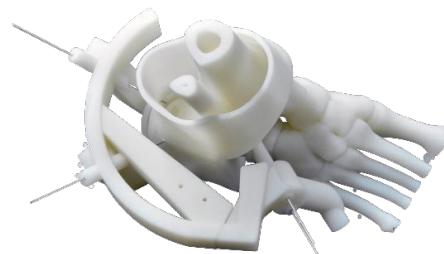
**INDUSTRIAL 30-WATT
CO2 LASER**

**TEMPERATURE CAPABLE
UP TO 190°C**

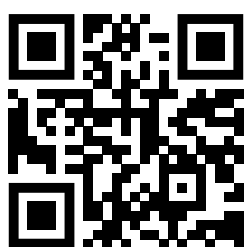
| TECHNICAL DATA | EFORM |
|-------------------------------|--|
| External Dimensions (L×W×H) | 1735×1205×1975 mm (68.3×47.4×77.8 in) |
| Build Cylinder Size (1 L×W×H) | 250×250×320 mm (9.8×9.8×12.6 in) |
| Net Weight | Approx. 1700 kg (3747.9 lb) |
| Laser Type | CO ₂ laser, 1×30W |
| Scanning Speed | High-precision galvo system |
| Laser Type | 0.06~0.3mm (0.0024-0.0118 in) |
| Scanner | Up to 0.8 L/h |
| Scanning Speed | Max. 7.6 m/s (24.9 ft/s) |
| Max. Chamber Temperature | 190°C (374°F) |
| Thermal Field Control | Eight-zone heater & Intelligent temperature control systems |
| Temperature Regulation | Continuous real-time build surface temperature monitoring & optimization |
| Operating System | 64 bit Windows 10 |
| Comprehensive Software | BuildStar, MakeStar® |
| Data File Format | STL |
| Key Software Features | Open machine key parameters, real-time build parameter modification, three-dimensional visualization, diagnostic functions |
| Inert Gas Protection | Nitrogen |
| Power Supply | EUR/China: 400V±10%, 3~/N/PE, 50/60Hz, 32A US: transformer sold with machine |
| Operating Ambient Temperature | 22-28°C (71.6-82.4°F) |
| Materials | FS3300PA, FS3401GB, FS4100PA, FS3150CF, FS3250MF, Ultrasint® PP nat 01, more materials to come |



Automotive Air
Outlet FS3300PA



Medical Surgical
guide FS3300PA



Additive Plus combines technology, expertise, and a personal touch to deliver various 3D printing services and products: 3D printers, 3D scanners, atomizers, industrial vacuums, laboratory and analytical instruments, industrial machinery, furnaces, software, materials and many more. Local engineering and maintenance team. Flexible payments terms available. We aim to empower everyone to live their additive journey effectively.

Additive Plus (A Plus Industrial LLC) | +1 (888) 797-7784 | +1 (747) 351-1640 | info@additiveplus.com | www.additiveplus.com



Sustainable
3D Manufacturing