

# FLIGHT HT1001P PLASTIC LPBF SYSTEM

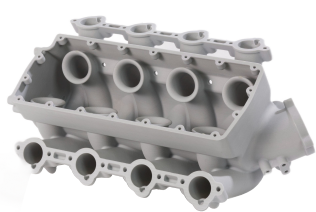


Quad-fiber laser for maximum productivity

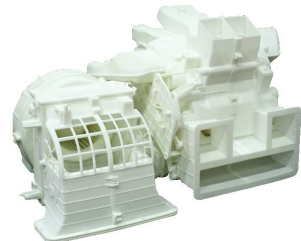
Truly open industrial grade plastic LPBF platform

Innovative Continuous Additive Manufacturing Solution Concept

## REPEATABLE, HIGH-QUALITY PARTS



Automotive



Aerospace



Consumer Products



Mold



Medical & Dental

## YOUR PRODUCTION TOOLS FOR INDUSTRIAL PLASTIC AM

We provide top-tier industrial-grade plastic LPBF systems, materials, and software. Our solutions offer unmatched flexibility in machine operation and material selection, with open parameter sets and processing chamber temperatures ranging from 190°C to 280°C.

## MATERIALS

Farsoon excels in high-performance PA12 and PA6 materials, developed by our strong R&D team. We also collaborate with leading suppliers to offer new, advanced materials through our open material policy.

FS3300PA, FS3300PA-F, FS3201PA-F, FS3401GB, FS3401GB-F, FS4100PA, FS3150CF, FS3250MF, FS6140GF, FS1092A-TPU\*, FS8100PPS, FS4100PA, FS 1092A-TPU, FS1088A-TPU\*, Ultrasint®, PA6\*, Ultrasint® PP nat 01\*, LUVOSINT TPU X92A-1064 WT.

# FLIGHT HT1001P PLASTIC LPBF SYSTEM

**LARGEST SLS BUILD ENVELOPE ON MARKET 39.4x19.7x17.7 IN**

**QUAD 300-WATT FIBER LASERS BOOSTS ULTIMATE PRODUCTIVITY**

**TEMPERATURE CAPABLE UP TO 220°C**

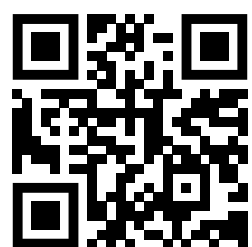
TECHNICAL DATA	FLIGHT HT1001P-2	FLIGHT® HT1001P-4
External Dimensions (LxWxH)	5590x2000x2170 mm (Full Module) (220.1x78.7x85.4 in) , 2680x2000x2170 mm (Build Station only) ( 105.5x78.7x85.4 in )	
Build Cylinder Size <sup>2</sup> (LxWxH)	1000x500x450 mm ( 39.4x19.7x17.7 in )	
Net Weight	Approx. 5000 KG ( 11023.1 lb ) (Full Module) / 3500KG ( 7716.2 lb ) (Build Station only)	
Laser Type	Fiber Laser, 2x300W	Fiber Laser, 4x300W
Scanner	High-precision three-axis galvo system	
Layer Thickness	0.06~0.3 mm ( 0.0024-0.0118 in )	
Scanning Speed	Max. 20 m/s (66 ft/s)	
Max. Chamber Temperature	220°C ( 428°F )	
Thermal Field Control	Multi-zone heater & Intelligent temperature control systems	
Temperature Regulation	Continuous real-time build surface temperature monitoring & optimization	
Operating System	64 bit Windows 10	
Comprehensive Software	BuildStar, MakeStar®	
Data File Format	STL	
Key Software Features	Open machine key parameters, real-time build parameter modification, three-dimensional visualization, diagnostic functions	
Inert Gas Protection	Nitrogen	
Power Supply	EUR/China: 400V±10%, 3~/N/PE, 50/60Hz, 50A US: transformer sold with machine	
Operating Ambient Temperature	22-28°C ( 71.6-82.4°F )	
Materials	FS3300PA-F, FS3201PA-F, FS3401GB-F, LUVOSINT® TPU X92A-1064 WT, more materials to come	



Automotive Spoiler Assembly



Adaptor Pipe



Additive Plus combines technology, expertise, and a personal touch to deliver various 3D printing services and products: 3D printers, 3D scanners, atomizers, industrial vacuums, laboratory and analytical instruments, industrial machinery, furnaces, software, materials and many more. Local engineering and maintenance team. Flexible payments terms available. We aim to empower everyone to live their additive journey effectively.

Additive Plus (A Plus Industrial LLC) | +1 (888) 797-7784 | +1 (747) 351-1640 | info@additiveplus.com | www.additiveplus.com



Sustainable  
3D Manufacturing