

# FS721M DMLS METAL 3D PRINTER



Large-frame Metal System boosts optimal productivity and great ROI

Truly open industrial grade DMLS platform

High-volume series production

## REPEATABLE, HIGH-QUALITY PARTS



Automotive



Aerospace



Consumer Products



Mold



Medical & Dental

## YOUR PRODUCTION TOOLS FOR INDUSTRIAL METAL AM

We provide top-tier industrial-grade metal DMLS systems, materials, and software. Our solutions offer unmatched flexibility in machine operation and material selection, with open parameter sets and multi-laser technology.

## METAL MATERIALS

Qualified Metal Material Solutions. More than 16 alloys over 68 validated processing parameters.

Offer a higher level of customized solutions that can be tailored to your specific material and application needs.

316L, TA15, Ti6Al4V, AlSi10Mg\*, IN718\*, HX\*, Maraging Steel Grade 300\*, IN625, 420, 15-5H, 17-43P, CoCrMo, CoCrMoW, CuSn10, Pure Copper, Tungsten, Tantalum.

# FS721M DMLS METAL 3D PRINTER

**EXTENSIVE BUILD ENVELOPE**  
28.3×16.5×16.5 IN

**FAST PRODUCTION SPEED WITH**  
DUAL OR QUAD 500-WATT LASERS

**INTEGRATED POWDER HANDLING**  
STATION FOR EASE OF OPERATION

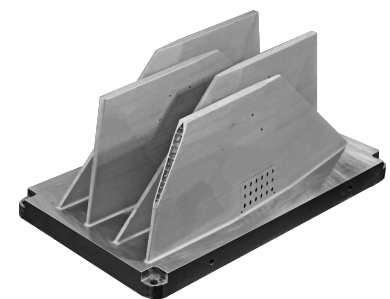
TECHNICAL DATA	FS721M-2	FS721M-4	FS721M-8
External Dimensions (L×W×H)	6610mm×1830mm×2500mm (260.2×72.0×98.4 in)		
Build Cylinder Size (1 L×W×H)	720×420×420 mm ( 28.3×16.5×16.5 in ) (not including build plate thickness)		
Net Weight	Approx. 5000 kg (11023.1 lb)		
Layer Thickness	0.02~0.1 mm ( 0.0008-0.0039 in )		
Scanning Speed	Max. 10.0 m/s ( 32.8 ft/s )		
Laser Type	Single Laser, 2×500W	Quad Lasers, 4×500W	Eight Lasers, 8×1000W
Scanner	F theta lenses or dynamic focusing system		F theta lenses
Inert Gas Protection	Argon/Nitrogen		
Average Inert Gas Consumption in Process	6-8 L / min		
Operating System	64 bit Windows 10		
Comprehensive Software	BuildStar, MakeStar®		
Key Software Features	Open machine key parameters, real-time build parameter modification, three-dimensional visualization, diagnostic functions		
Data File Format	STL		
Power Supply	EUR/China: 400V±10%, 3~/N/PE, 50Hz, 32A/40A US: transformer sold with machine		
Operating Ambient Temperature	22-28°C ( 71.6-82.4°F )		
Materials	316L, TA15, Ti6Al4V, AISi10Mg*, IN718*, HX*, Maraging Steel Grade 300*, more materials to come		



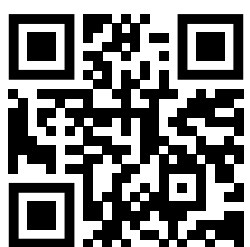
Robotic Stabilizer Mount Aluminium



Automotive Front and Rear Hub Integration



Wing Rudder



Additive Plus combines technology, expertise, and a personal touch to deliver various 3D printing services and products: 3D printers, 3D scanners, atomizers, industrial vacuums, laboratory and analytical instruments, industrial machinery, furnaces, software, materials and many more. Local engineering and maintenance team. Flexible payments terms available. We aim to empower everyone to live their additive journey effectively.

Additive Plus (A Plus Industrial LLC) | +1 (888) 797-7784 | +1 (747) 351-1640 | info@additiveplus.com | www.additiveplus.com



Sustainable  
3D Manufacturing