

FS422M DMLS METAL 3D PRINTER



Highly Productive Metal PBF System for Economy Serial Additive Manufacturing

Truly open industrial grade DMLS platform

Significant productivity

REPEATABLE, HIGH-QUALITY PARTS



Automotive



Aerospace



Consumer Products



Mold



Medical & Dental

YOUR PRODUCTION TOOLS FOR INDUSTRIAL METAL AM

We provide top-tier industrial-grade metal DMLS systems, materials, and software. Our solutions offer unmatched flexibility in machine operation and material selection, with open parameter sets and multi-laser technology.

METAL MATERIALS

Qualified Metal Material Solutions. More than 16 alloys over 68 validated processing parameters.

Offer a higher level of customized solutions that can be tailored to your specific material and application needs.

316L, TA15, Ti6Al4V, AlSi10Mg*, IN718*, HX*, Maraging Steel Grade 300*, IN625, 420, 15-5H, 17-43P, CoCrMo, CoCrMoW, CuSn10, Pure Copper, Tungsten, Tantalum.

FS422M DMLS METAL 3D PRINTER

**EXTENSIVE BUILD ENVELOPE UP TO
16.7×16.7×16.5 IN**

**HIGH PRODUCTIVITY WITH QUAD
500-WATT LASERS OPTION**

**CONTINUOUS MANUFACTURING
CAPABILITY BOOSTS MACHINE TURN-
OVER RATE**

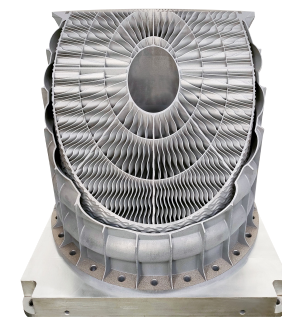
TECHNICAL DATA	FS121M	FS121M-E	FS121M-E
External Dimensions (L×W×H)	3520×2220×2700 mm (138.6×87.4×106.3 in)		
Build Cylinder Size (1 L×W×H)	425×425×420 mm (16.7×16.7×16.5 in) (not including build plate thickness)	425×425×420 mm (16.7×16.7×16.5 in) (not including build plate thickness)	425×425×550 mm (16.7×16.7×21.7 in) (not including build plate thickness)
Net Weight	Approx. 3700 KG (8157.1 lb)		
Layer Thickness	0.02~0.1 mm (0.0008-0.0039 in)		
Scanning Speed	Max. 10 m/s (32.8 ft/s)		
Laser Type	Single Laser, 1×500W	Quad Lasers, 4×500W	Quad Lasers, 4×500W
Scanner	F theta lenses		
Inert Gas Protection	Argon/Nitrogen		
Average Inert Gas Consumption in Process	3-5 L / min		
Operating System	64 bit Windows 10		
Comprehensive Software	BuildStar, MakeStar®		
Key Software Features	Open machine key parameters, real-time build parameter modification, three-dimensional visualization, diagnostic functions		
Data File Format	STL		
Power Supply	EUR/China: 400V±10%, 3~/N/PE, 50Hz, 32A US: transformer sold with machine		
Operating Ambient Temperature	22-28°C (71.6-82.4°F)		
Materials	316L, HX, HAYNES 230*, IN718, IN625, AISi10Mg, AlMgScZr, TA15, Ti6Al4V, CuSn10, more materials to come		



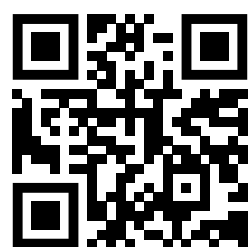
AUV Chiller Aluminum



Combustion chamber housing



In Line Tube Shell Heat exchanger



Additive Plus combines technology, expertise, and a personal touch to deliver various 3D printing services and products: 3D printers, 3D scanners, atomizers, industrial vacuums, laboratory and analytical instruments, industrial machinery, furnaces, software, materials and many more. Local engineering and maintenance team. Flexible payments terms available. We aim to empower everyone to live their additive journey effectively.

Additive Plus (A Plus Industrial LLC) | +1 (888) 797-7784 | +1 (747) 351-1640 | info@additiveplus.com | www.additiveplus.com



Sustainable
3D Manufacturing