

# FS301M DMLS METAL 3D PRINTER



User-centric design

High productivity by a large build volume and dual-laser technology

Truly open industrial grade DMLS platform

Designed to occupy minimal space while maintaining high throughput

## REPEATABLE, HIGH-QUALITY PARTS



Automotive



Aerospace



Consumer Products



Mold



Medical & Dental

## YOUR PRODUCTION TOOLS FOR INDUSTRIAL METAL AM

We provide top-tier industrial-grade metal DMLS systems, materials, and software. Our solutions offer unmatched flexibility in machine operation and material selection, with open parameter sets and multi-laser technology.

## METAL MATERIALS

Qualified Metal Material Solutions. More than 16 alloys over 68 validated processing parameters.

Offer a higher level of customized solutions that can be tailored to your specific material and application needs.

316L, TA15, Ti6Al4V, AlSi10Mg\*, IN718\*, HX\*, Maraging Steel Grade 300\*, IN625, 420, 15-5H, 17-43P, CoCrMo, CoCrMoW, CuSn10, Pure Copper, Tungsten, Tantalum.

# FS301M DMLS METAL 3D PRINTER

**VERSATILE BUILD ENVELOPE  
12.0×12.0×16.1 IN**

**HIGHLY PRODUCTIVE SINGLE  
OR DUAL 500-WATT LASERS**

**OUTSTANDING QUALITY &  
PERFORMANCE**

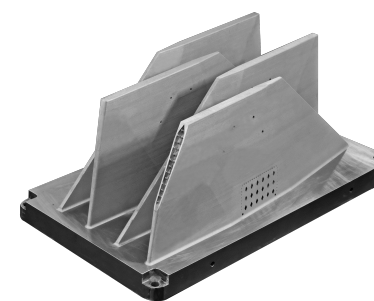
TECHNICAL DATA	FS301M	FS301M-2
External Dimensions (L×W×H)	2360×1530×2150 mm (92.9×60.2×84.6 in)	
Installation Footprint (L×W×H)	3500×3000×2800 mm ( 137.8×118.1×110.2 in )	
Build Cylinder Size (1 L×W×H)	305mm×305mm×410 mm ( 12.0×12.0×16.1 in ) (not including build plate thickness)	
Net Weight	2800 kg ( 6172.9 lb )	
Layer Thickness	0.02 - 0.1mm ( 0.0008-0.0039 in )	
Scanning Speed	Max. 15.2 m/s ( 49.9 ft/s )	
Laser Option	Single Laser, 1×500W	Dual Lasers, 2×500W (dual-laser with full coverage of build area by each laser)
Scanner	Dynamic focusing system	
Inert Gas Protection	Argon/Nitrogen	
Average Inert Gas Consumption in Process	3 - 5 L/min	
Operating System	64 bit Windows 10	
Comprehensive Software	BuildStar, MakeStar®	
Key Software Features	Open machine key parameters, real-time build parameter modification, three-dimensional	
Data File Format	STL	
Power Supply	EUR/China: 400V±10%, 3~/N/PE, 50Hz, 15A US: transformer sold with machine	
Operating Ambient Temperature	22-28°C ( 71.6-82.4°F )	
Materials2	316L, 17-4PH, 420, HX, HAYNES 230*, IN718, AISi10Mg,TA15, Ti6Al4V, more materials to come	



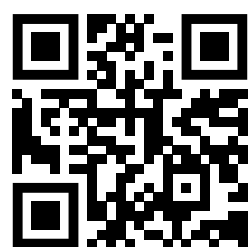
GE Bracket Aluminum



Industry Application-Jewelry



Wing Rudder



Additive Plus combines technology, expertise, and a personal touch to deliver various 3D printing services and products: 3D printers, 3D scanners, atomizers, industrial vacuums, laboratory and analytical instruments, industrial machinery, furnaces, software, materials and many more. Local engineering and maintenance team. Flexible payments terms available. We aim to empower everyone to live their additive journey effectively.

Additive Plus (A Plus Industrial LLC) | +1 (888) 797-7784 | +1 (747) 351-1640 | info@additiveplus.com | www.additiveplus.com



Sustainable  
3D Manufacturing